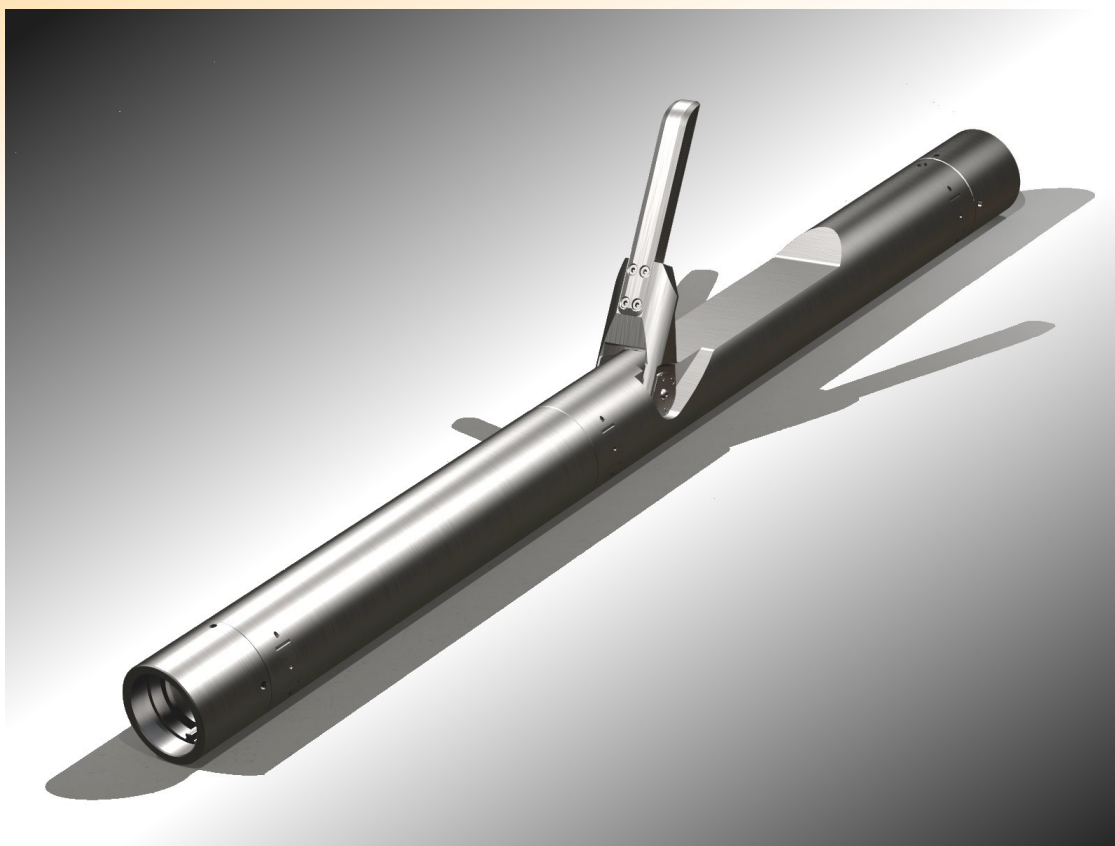


# GEOREC-A

**High temperature analog downhole seismic tool, fitted with an evolution of the reliable Vinci's GEOLOCK electronic cartridge.**



- ✓ Working temperature up to 205°C continuously (401°F), without active cooling.
- ✓ Working pressure up to 1,500 bar (21,500 psi)
- ✓ Independent power supply - on each level -
- ✓ Simplified electronics to prevent system breakdown

# Technical specifications

GEOREC-A is a downhole analog tool designed for seismic acquisition in very HT conditions. Each GEOREC-A single level includes 3 fixed or gimbaled geophones and is provided with its own power supply.

Without electronic transmission, the system is more simple and reliable.

Up to 2 GEOREC levels can be successively connected with a 7 conductors standard cable.

## ▼ Mechanics

Maximum temperature	<i>205°C continuously (405°F)</i>
Maximum pressure	<i>1,500 bar (21,500 psi)</i>
Maximum number of levels	<i>2</i>
Diameter	<i>80 mm (3.15")</i>
Total tool length	<i>1,050 mm (41")</i>
Compatible casing diameter	<i>3.75" to 16"</i>
Locking force ratio	<i>5:1 to 20:1</i>
Maximum cable length	<i>6,000 m</i>
Distance between levels	<i>no limitations</i>

## ▼ Sensors

Fixed	<i>SM-45 15Hz HT</i>
Gimbaled	<i>On request</i>
Pre-amplification	<i>54 dB</i>

